

# Contractor Business Meeting

Newport News Shipbuilding  
A Division of HII

Mike Kehoe  
Plant Engineering  
June 3, 2022



Huntington Ingalls Industries Proprietary

# AGENDA

- Introductions – Mike Kehoe
- Opening Remarks – Paul Lindgren
- Safety Topics – Vince Constande
- Access Badge Requirements – Gerald Scheuer
- Drive-in Tag Requirements – Mike Kehoe
- Smoking Policy Change – July 11- Mike Kehoe
- B64-3 Crane Envelope Intrusion – Dave Gordula
- Dry Dock Certifications – Tim Fortune
- Environmental – Jack Heald

Paul Lindgren – Director of Facilities Engineering

Phone: (757) 380-7254

Cell (757) 897-9094

[Paul.Lindgren@hii-nns.com](mailto:Paul.Lindgren@hii-nns.com)

# O27 Contractor Safety Update

Newport News Shipbuilding  
A Division of HII

Vince Constande, Field Operations  
Virginia Buskee, Contractor Programs  
Renee Chabot, H&S Manager  
June 3, 2022



# O27 Contractor Safety Talking Points

## Overview:

Safety Performance – Recent Trends

Significant Accidents & Near Misses

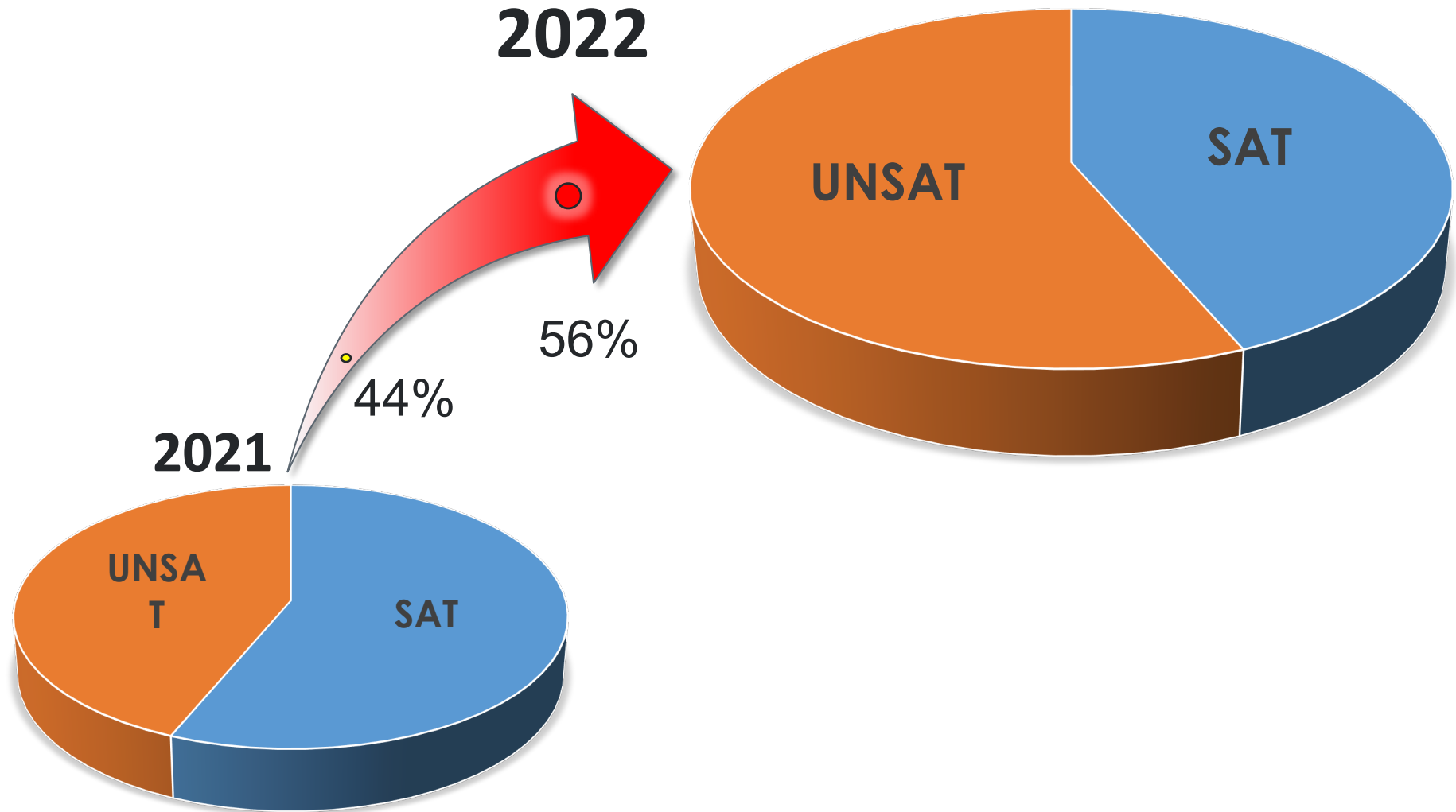
Lifting & Handling

Excavations and Permits

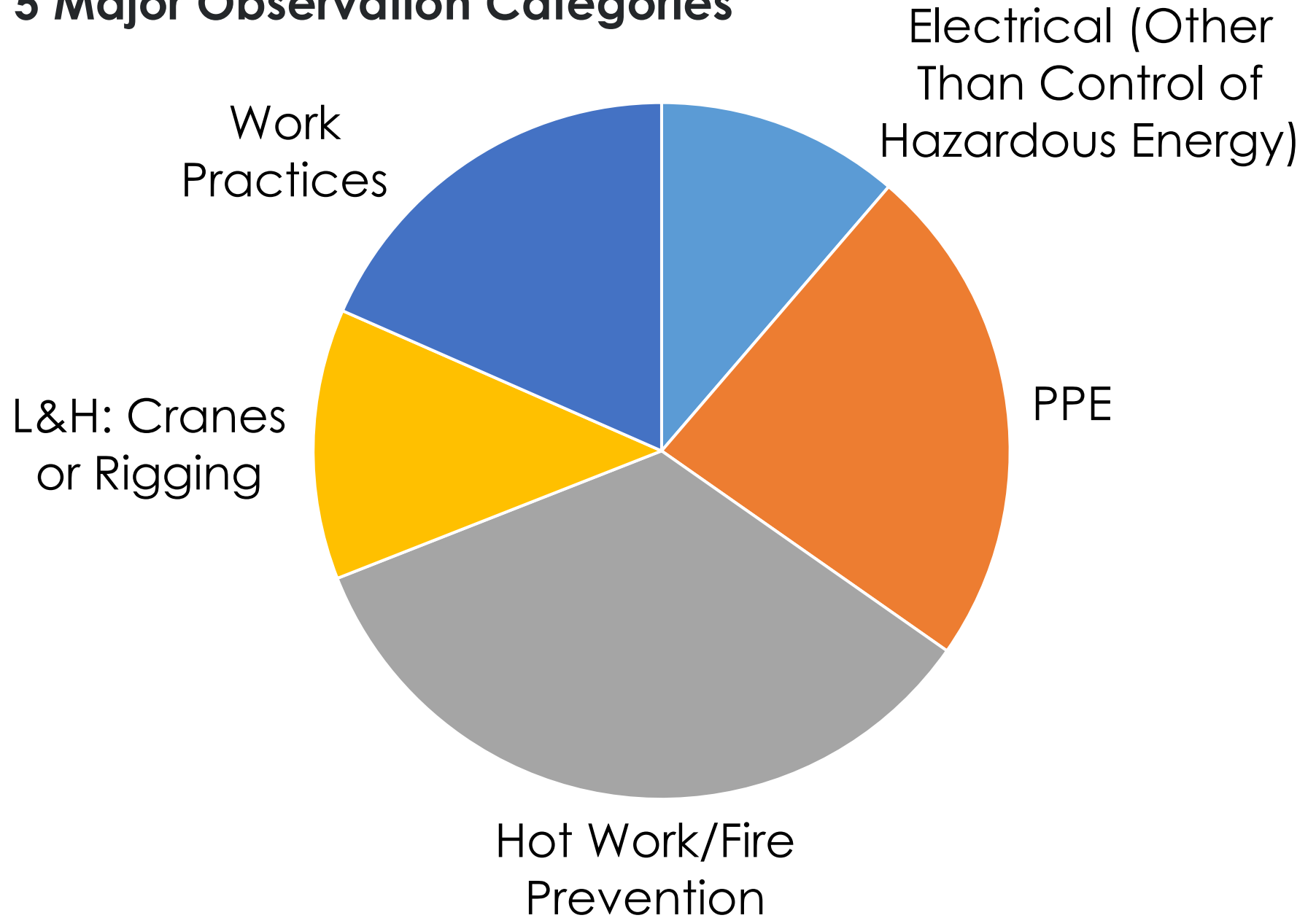
Contractor EH&S Safety Resources

# Facilities Contractor Safety Performance

## % of UNSAT vs TOTAL Safety Observations



## Top 5 Major Observation Categories



## Installing auger displacement piles for the Turning Station project:

- The auger struck and penetrated a duct bank containing communication, low voltage and high voltage cables.

## Cutting a sheet metal partition in a pump room using a Metabo® angle grinder equipped with a Ø6” cutting wheel:

- While cutting the partition, the wheel bound causing it to kickback into an adjacent energized 480VAC conduit cable.
- The cable shorted to ground and tripped the adjacent panel and breakers.



## Crane Accident, Steel Erection- The plan was to lift three beams in the horizontal orientation using a multiple-lift (“tree”) rigging assembly:

- The Foreman placed the “tree” rigging assembly on the hook of the crane with a 3/8” x 8’ wire rope pendant attached to each detail member using a single choke configuration around the center point of each piece.
- The load was lifted and positioned above and between two of the building trusses.
- In the process of lowering the load, the detail at the bottom of the rigging arrangement made contact with one of the trusses causing the detail to slide out of the rigging and fall approximately 110 feet to the ground.

## Crane Accident-Barge mounted lattice boom crane suffered catastrophic boom collapse.

- The operator was lifting a spud to place on the barge deck.
- Lost control of the load and it fell overboard.
- The surge from the spud falling, caused the crane cab to rotate and the lattice boom collapsed to the rear of the crane and came to rest on the tug pilot house and deck.

**Steel erection – Using a come-a-long to align and connect columns, estimated 40 feet above the concrete deck.**

- The chain failed and the employee fell.
- The employee was caught by a personal fall arrest system.

## Contractor L&H Expectations:

- Ensure all of their cranes, crane operators, riggers and signal persons meet applicable OSHA regulations and ANSI/ASME standards incorporated by reference within the OSHA regulations.
- Follow procedures specific to NNS as required by contractual requirements and the *Contractor Environmental Health and Safety Resources Manual*.
- Crane operators and qualified riggers attend the *Contractor's Lifting & Handling (L&H) Operations Briefing* prior to any L&H operations.
- Reporting requirements for crane accidents/incidents.
  - Emergency: (757) 380-2222
  - Facilities Service Desk: (757) 688-9888

## Contractor Excavation Expectations:

- If performing operations under NNS cognizance, required to have an Excavation / Trenching section in your approved Safety Programs.
- Follow all requirements in 29 CFR 1926 Subpart P – Excavations
  - Competent Person,
  - Inspection requirements,
  - Soil classification,
  - Cave in protection.
- Follow procedures specific to NNS as required by contractual requirements and the *Contractor Environmental Health and Safety Resources*.
  - Permit requirements,
  - Requirements for handling excavation soil on NNS property,
  - Discovering unmarked utility lines,
  - Emergency protocol.

# NNS Suppliers Page

Newport News Shipbuilding (NNS) is committed to providing a safe environment for all persons visiting or working at NNS. This means that contractors working at NNS and NNS work sites are required to meet minimum safety standards before contracts can be awarded. They are also required to maintain these standards for the duration of their work at Newport News. Also, while contractors are expected to have effective safety programs and to monitor and comply with applicable laws and regulations, there are some situations where procedures specific to NNS apply. The Newport News Contractor Environmental, Health and Safety Resource Manual was developed to assist potential and existing contractors in these areas. The manual describes the contractor health and safety evaluation process, describes specific EH&S programs that are considered critical and lists additional health and safety resources that may be useful to contractors. Many of the topics are contractual requirements. This manual is not inclusive of every possible Environmental, Health and Safety topic and it is the responsibility of the contractor to be knowledgeable of and comply with additional laws and regulations.

Download the complete document here or view selected sections below:

**Introduction**

- Revision History
- Table of Contents

**Part I - General**

- General Information

**Part II - Preventing Injuries and Illnesses**

- Employee Safety
  - Cranes
  - Electrical
  - Excavations
  - Fall Safety
  - Hazardous Energy Control (LOTO)
  - Personal Protective Equipment
  - Scaffolding and Fall Protection
  - Scaffolds Lifting
- Employee Health
  - Abrasive Blasting
  - Asbestos
  - Automobile
  - Carbon Fiber
  - Confined Spaces
  - Handheld Chlorine (COV)
  - Hazard Communication
  - Lead
  - Oxygen
  - Storage
  - Heat Stress
  - Other Hazards
  - Silica
  - Strychnine

**Part III - Environmental Programs**

- Waste Management
- Transfer Operations
- Unlaid Waste
- Fleet Tracking
- PCB

**Appendices**

- Definitions
- Evaluation Form
- NNS Environmental Permitting
- Resource List
- Crane Certificate
- Contractor SDS Cover Sheet
- Excavation Permit
- Environmental Labels
- Containment Inspection Form
- No Discharge List
- HEDMATT Forms (for parking)
- VOC Limits

<https://supplier.huntingtoningalls.com/sourcing/contractor-environmental-health-safety-resources/>



# ACCESS BADGE REQUIREMENTS

Form N9327 (REV 19)

- Duration of visit to Newport News Shipbuilding may not exceed two (2) years and/or the expiration date of the contract / purchase order.
- Verifications must be done by Backgroundchecks.com
- Provide the best information possible. EXAMPLE: send a copy of diplomas, W2, check stubs to Backgroundchecks.com
- Provide all jurisdictions where employee lived and worked for criminal background check
- Provide good contacts (name and phone number) for work and education
- Must show 7 years of employment, “back from today”
- If release forms are required for institutions, be prepared to provide
- Bring ID, proof of citizenship and the certificate from Backgroundchecks to the pass office to receive badge
- All information must match on those documents
- Start to finish this process takes at least 1 month to complete
- O15 Investigators Office will assist if all effort has been made with no advancement

# DRIVE-IN TAG REQUIREMENTS

- Form NN 9297 (REV 9)
- A separate form must be completed for each tag requested.
- The tag is tied to the contractor name
- The company name on the vehicle and badge must match
- Magnetic signs are required if name is not printed on the vehicle
- Provide specific details for the justification. What are you doing and what is the purpose?
- Do not request renewal if it is for a new request
- Form must be electronically completed. Hand written is not acceptable
- Make sure information is correct. Incorrect Social Security numbers is a common error
- If requesting a transfer, be clear on previous owner
- Approval is sent to sponsor. Wait for confirmation before going to pass office



# SMOKING POLICY

Effective July 11, 2022, Newport News Shipbuilding will be a tobacco-free facility. This means Newport News Shipbuilding will prohibit the use of tobacco products on company property. Violations of this policy could result in denied access to our facility.

# B64-3 CRANE ENVELOPE INTRUSION

On Thursday, April 21, 2022, the Accident Response Team (ART) was notified of a possible crane accident involving 4.9-ton bridge crane asset 3681 in Building 64 (Electrical Shop). In the process of traveling to the west end of the shop, the crane contacted a temporary support structure located in the travel path of the crane. The securing bolts on the bracket were bent. There were no injuries.

### **Background and Event:**

A cracked sanitary vent pipe was discovered on the 2<sup>nd</sup> floor of B64. A Contractor was hired to investigate extent of damage and to repair vent pipe as determined by NNS once uncovered. Contractor replaced known pipe on 2<sup>nd</sup> floor and then continued with repairs on the 3<sup>rd</sup> floor without notifying and reviewing with Contractor Coordinator. On 3/29/22 Contractor coordinated with production personnel on the 3<sup>rd</sup> floor, installed a crane warning (orange diamond) tag on the crane controls, and commenced work. Contractor installed a temporary support within the crane envelope and performed vent pipe repairs. Contractor did not remove the temporary support after completion of work, which was the same day.

### **Findings:**

- Contractor did not notify Coordinator in accordance with the Purchase Order scope that the investigation of the vent pipe was complete and required repairs on the 3<sup>rd</sup> floor and within the crane envelope.
- Contractor utilized a crane warning (orange diamond) tag in lieu of LOTO.

### **Lessons Learned:**

- Work near or within the crane envelope that may present a foul requires non-deviational instructions and inspection/operation check to verify no foul is present prior to placing the crane back in service.
- Work near or within the crane envelope or travel path where the crane structure creates a hazard (i.e. struck-by hazards) requires LOTO
- Filling out and applying crane warning (orange diamond) tags shall only be performed by NNS Crane Operations and Maintenance Personnel

### **Procedure References:**

- SSW F-1089.1 How to Perform Maintenance Activities on NNS Lifting and Handling Equipment
- SSW F-1042.3 Facilities Division Project Design Process Instructions (Figure 2 Work In or Near Crane Envelope Flowchart and Figure 3 Crane and 3<sup>rd</sup> Rail Envelope)
- SSP Y-1078 Control of Hazardous Energy



Temporary bracket located in crane travel path



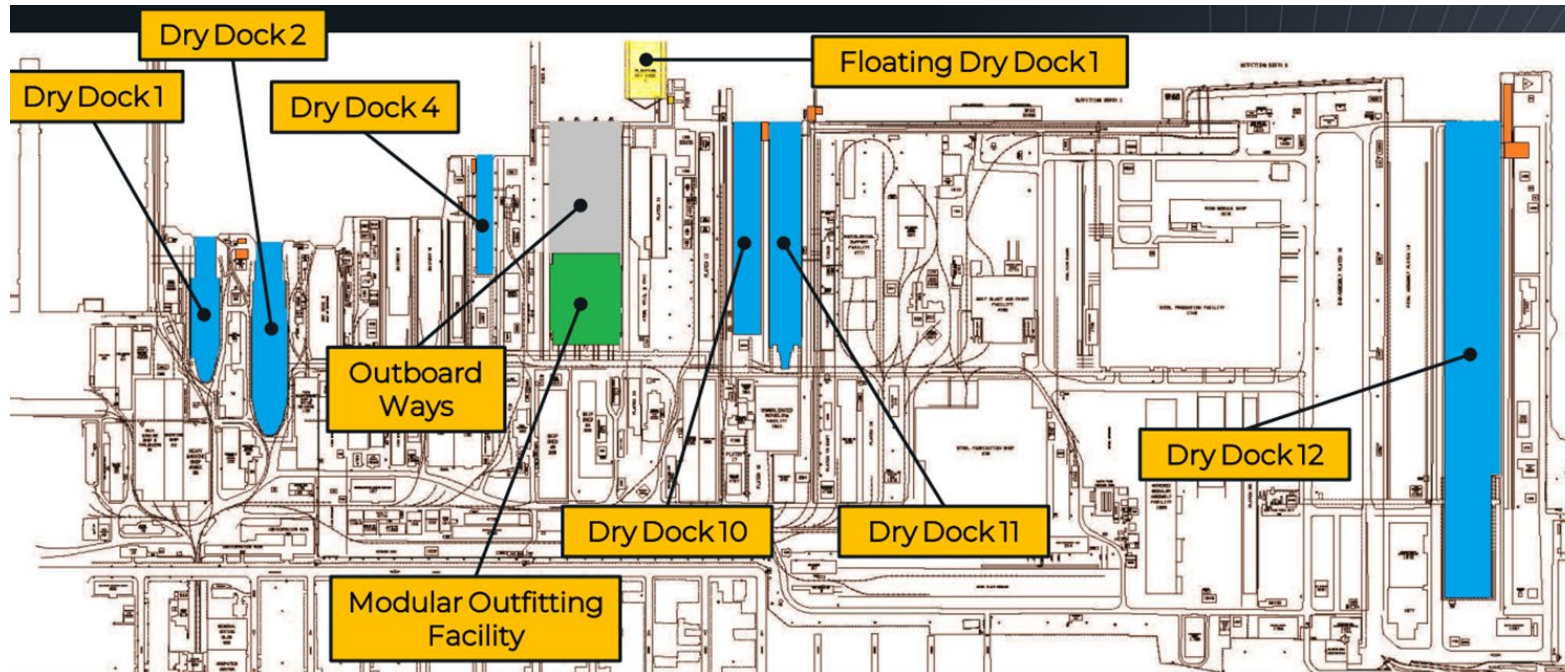
Temporary bracket and bent securing bolts



# CERTIFIED DRY DOCKS/FACILITIES

- NNS is required to maintain these facilities to MIL-STD-1625D(SH)
- Each certified facility has a responsible dock/system engineer
- Technical Work Instructions (TWIs) are required to perform work in a certified facility
- Should there be any reason the TWI can't be followed, contact the contract coordinator and/or dock engineer

System Description	Primary Engineer	Phone Number
Dry Docks 1, 2 and 4	Zimmerman, Joseph N.	(757) 688-2748
Dry Dock 10 & 11	Carter, Andrew H.	(757) 534-2945
Dry Dock 12	Keen, Thomas E.	(757) 534-0943
Floating Dry Dock (FDD)	Pfister, Jeffrey G.	(757) 688-3368
MOF & Land Level Facility (LLF)	Pfister, Jeffrey G.	(757) 688-3368



# For Spill Prevention or Waste Management Questions Contact your Contractor Coordinator or O27 Environmental Engineering

Environmental Engineering Manager	Jack Heald	(757) 380-7128
Industrial & Storm Water Discharges. Sewer Discharges. Spill Prevention and Response	Jim Erickson	(757) 688-9247
Universal Waste, Waste, Excavated Soil Disposal	Mark Hiltke	(757) 534-4067
Mixed Waste, PCBs, DOT, Waste	Jack Heald	(757) 380-7128
SDS Approvals	Mark Hiltke	(757) 534-4067
Temporary Air Emission Sources, Paint and Coating Approvals	Mike Dennis	(757) 534-3836
Temporary Air Emission Sources, Ozone Depleting Substances	Sarah Lambert	(757) 534-3645



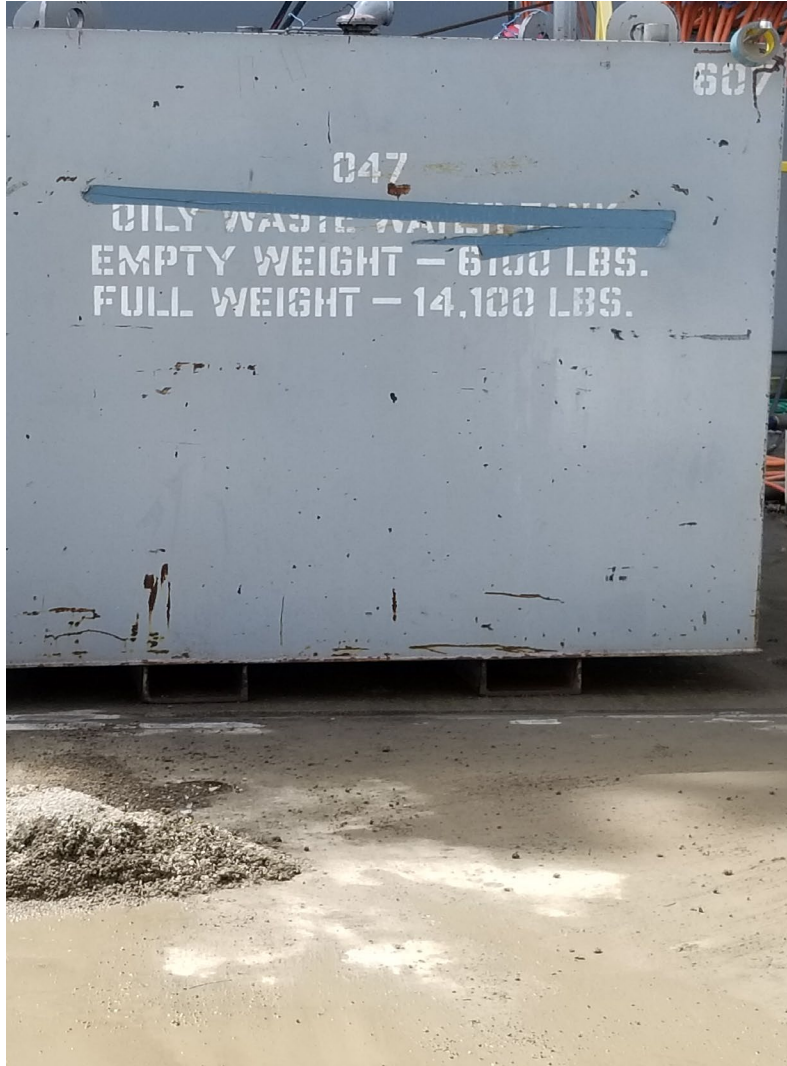
# Spill Details

Regulatory Agencies (DEQ, VPDES, Coast Guard)

- 3 Notice of Violations and 1 Warning Letter (spills reaching the River)
  - Pier 6 spill-crane truck gear box leak (NOV)
  - Pier 2 Punctured 55-gallon drum (NOV)
  - Pier 3 Oily waste transfer spill (NOV)
  - Pier 5 piping failure during oily waste transfer. (WL)
- Reportable spills
  - 2019: 4
  - 2020: 8
  - 2021: 10
- Continued Corrective actions –
  - Data Collection & Risk Assessment
  - Transfer Teams Surveillances
  - Spill Kit Program Improvements
  - Assessments of 55-gallon drum storage areas/management & Secondary containment
  - Procedure & Training Updates, increased communication



# Environmental Engineering Spill Response



## Lease Equipment

- Delivering equipment without drain plugs installed
- Inspect all leased equipment with fuel tanks
- Hose leaks

## Mercury

- Spill B60: 3-Day cleanup, Outside response
- B11: Sewer piping

## Rusted Transformer

- Transformers were being removed from Pier 5 with rusted bottom

## Shipboard SF & NNS

- 114N Bilge Keel UHP
- CVN78 Void tank overfill

## Non-Radiological and Radiological

- RAMCO chromate pill

## All organizations: NNS, SF, Contractors, Navy

- Clean Harbors spill-transportation incident

## Ham Sandwich

Spills to the River require notification to the National Response Center

Spills on land > 25 gallons require notification to VDEQ

# Things to be aware of

- + Condition of equipment
- + Last maintenance done on equipment
- + Could secondary containment be used
- + Could something go down a storm drain
- + Location of nearest drains
- + Location of spill kits near worksite
- + How to dispose of waste
- + Best management practices

# What to do in the case of a spill

- + If safe, secure the area as best as possible
  - + Stop running equipment
  - + Use spill kits to contain as best as possible
- + **Call NNS Communications Center 380-2222**
  - + Your Name
  - + Type and quantity of spill
  - + Location
  - + How the spill happened
  - + What steps have been taken to secure the spill
- + Stay at the site until spill response personnel arrive
- + Assist spill response personnel when they arrive



# O27 EE Interest Items

## **Clean Air Act information**

- All leased equipment with portable engines
- Blast & Coat Operations

## **U.S. Coast Guard**

- Updated manuals
- Spill kits
- Training requirements: PIC

## **Radiological (Non-Navy)**

- Contractor instruments

## **SDS Approvals**

- Prior to performing work

## **Disposal**

- Sampling
- Hazmat/Electronics with building renovations & Demolitions
- Hazardous waste through Clean Harbors
- Notification for bulk liquids

## **Cleanliness Initiative**

- Fire safety & H&S concerns
- Discharge to the James River
- Label & close containers





# Future Impact to Contractors

## Clean Air Act information

- All leased equipment with portable engines
- Blast & Coat Operations

## Spill Mitigation

- Spill Kits
- Leased equipment checks

## HII Corporate Environment Sustainability & Governance (ESG) Report

- Environmental metrics which inform our stakeholders of the company's environmental sustainability efforts
- EPA Scope 1 and 2 reporting

## QUESTIONS????

If you have questions regarding this presentation, please contact your Contract Coordinator or:

Mike Kehoe

O41 – Plant Engineering

757-534-3241

Michael.T.Kehoe@hii-nns.com