



**Newport News  
Shipbuilding**

A Division of Huntington Ingalls Industries

# **Contractor Business Meeting**

November 8, 2019

Mike Kehoe  
Plant Engineering

# Agenda

- Introductions – Mike Kehoe
- Opening Remarks – Adam Zydron
- Safety Topics – Ryan McTheny
- Value Streams 2020 vision– Value Stream Managers
- Scheduling Initiative – Alberto Ramos
- Procurement Strategies - Libby Bethea/Adam Zydron
- Accounts Payable –
  - Invoicing – Susan West
  - Year-end Invoicing – Keith Miller



Adam Zydron – Manager of Facilities Engineering

Phone: (757) 688-1015

Cell (757) 375-2940

[Adam.R.Zydron@hii-nns.com](mailto:Adam.R.Zydron@hii-nns.com)





**Newport News  
Shipbuilding**

A Division of Huntington Ingalls Industries

# Contractor Quarterly Safety Update

November 8, 2019

## O27 Facilities & Contractor Safety

Ryan McTheny, Facilities & Contractor Program Coordination

Vince Constande, Field Operations

Virginia Buskee, Contractor Programs

George Bradby, H&S Manager

# O27 Contractor Safety Talking Points

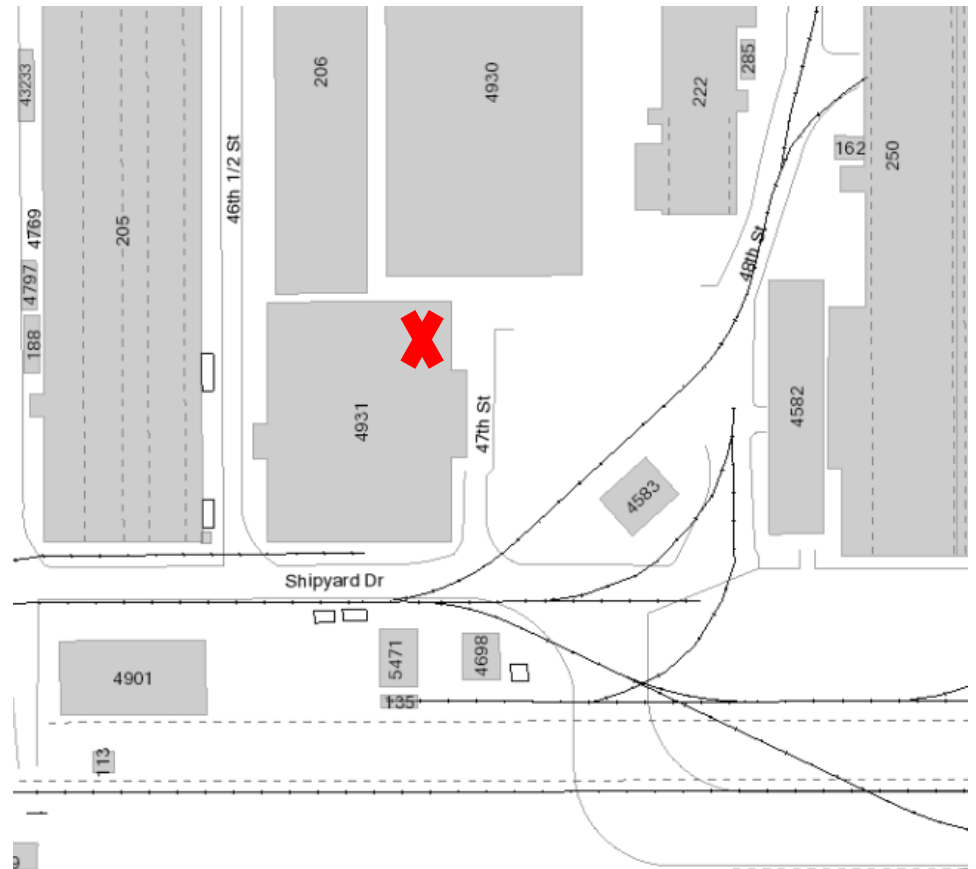
- Communication with contractors and vendors
  - Customer Urgency, Emergent Work, Timeline, Apply Early
- Environmental, Safety, and Health Observat Report (ESHOR)
  - Purpose, Process, Follow Through, Corrective Actions
- Emphasis on “High Risk Work”
  - Electrical, Control of Hazardous Energy
  - Excavation, Confined Space
  - Fall Protection
  - Cranes, Lifting & Handling
- Contractor Safety Forum
- Contractor Safety Metrics



<https://launchsa.org/event/slaying-dragons-that-hold-you-back-from-your-entrepreneur-self-3/>



- Kickoff: January 10<sup>th</sup> from 8:00am-10:00am
- Reoccurring Monthly, 2<sup>nd</sup> Friday
- Parking is limited
- Information will be made available on the supplier site
- Agenda will be sent out in advance
- Project Manager, Superintendent, Safety Manager  
\*\*\*Please limit to 1-2 individuals per company





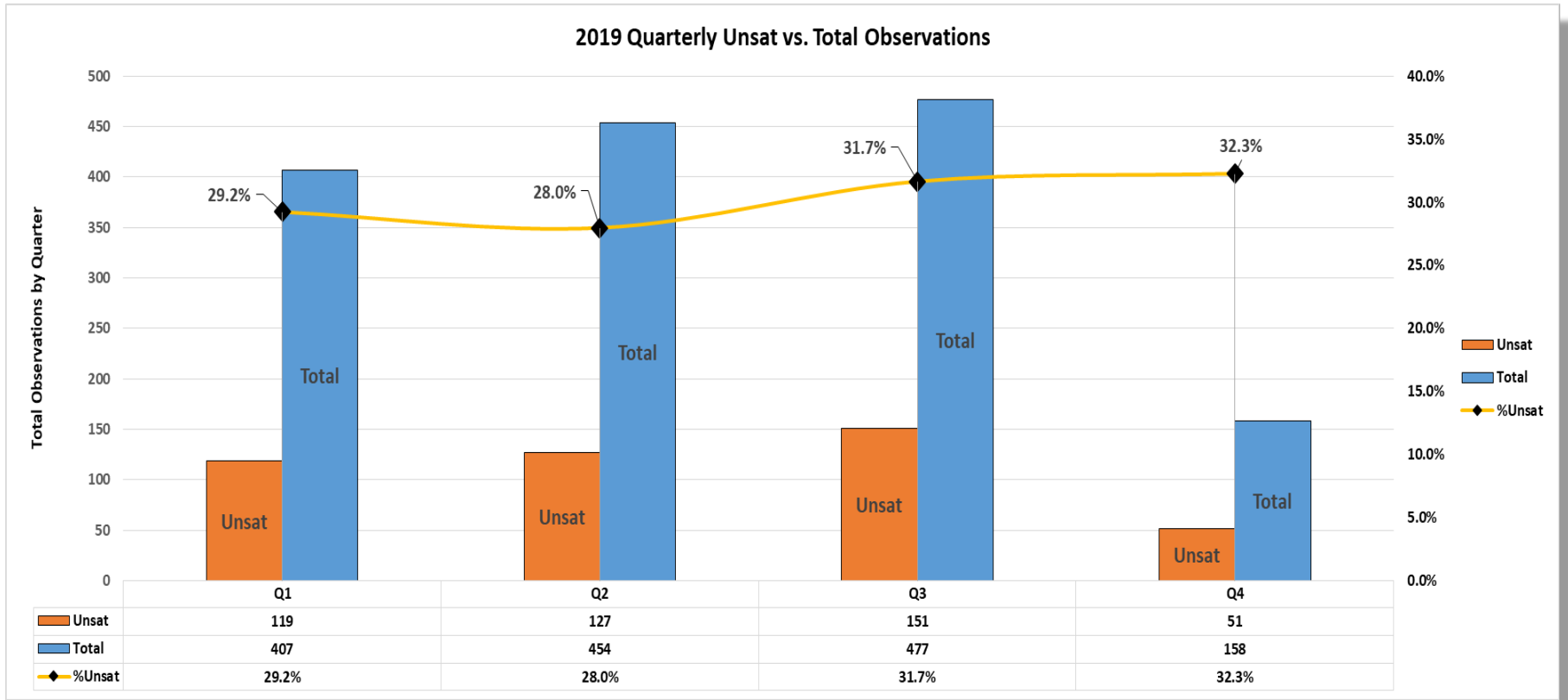
**Newport News  
Shipbuilding**

A Division of Huntington Ingalls Industries

2019 YTD

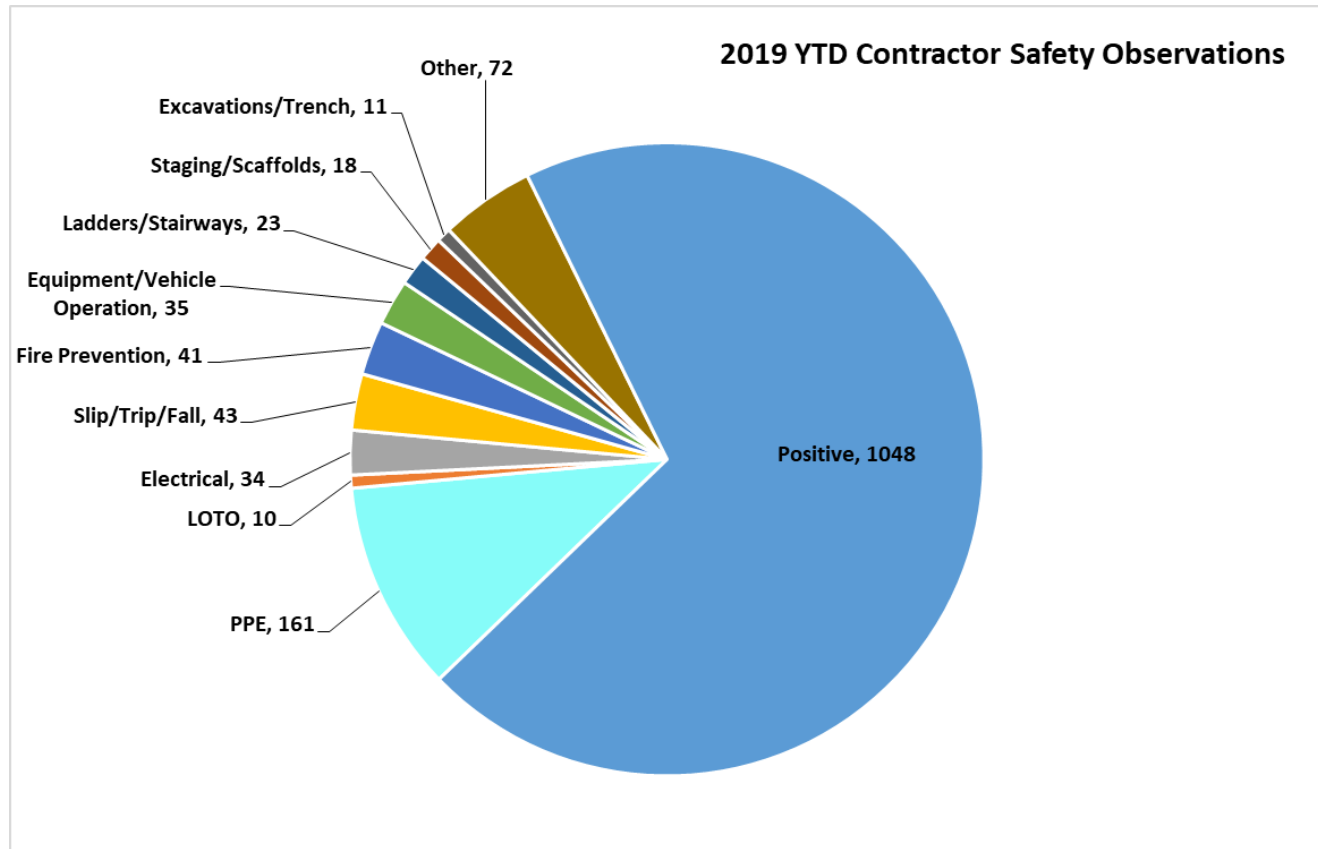
## Contractor Safety Metrics

O27 Facilities and Contractor Safety





## 2019 YTD Contractor Safety Observations, n=1495



- 70% total positive observations
- Non-Compliance with PPE requirements and regulations
  - Potential Reduction of risk and unsatisfactory observations by 25% with donning of proper PPE
- Not calculating fall clearance and selecting appropriate lanyard
- LOTO Plans: “Detail the Details”
- 35ft rule: Combustible Materials
- Safety is your ally and resource
- How can I help?



**Curtis McTeer – Manager Supply Chain  
Procurement**

**Phone: (757) 688.3664**

**[Curtis.McTeer@hii-nns.com](mailto:Curtis.McTeer@hii-nns.com)**

## **VALUE STREAM MANAGERS**

**Michael Romanelli – Utilities and  
Waterfront Projects**

**Davis Hill – VCS Block-V Program Support**

**Ben Duman – JMAF Project**

**Bill Boyd – Buildings & Grounds and  
Architectural**

**Ed Delaney – Manufacturing and Shops**

**Scott Miller – CVN 80/81 Program Support**



# 5 Year Plan



- **Waterfront Projects – (Estimated \$150 Million)**

The Waterfront team provides NNS with facilities support necessary to operate, construct, and maintain the infrastructure to build the most advanced ships in the world. We deliver quality projects on schedule and on budget.

- FDD Overhauls - every year
- Dry Dock Gate Overhauls
- FAF Refurbishments
- Port Security Barriers
- Readiness – multiple every year
- Dredging – every year

- Ocean Transport Barge Berths
- ISCVN Campus Improvements
- DD 12 Superflood Modifications
- Dry Dock Concrete Repairs
- Tug/Barge Repairs
- Fendering / Bulkhead Repairs

## Contact Information

**Michael Romanelli, Manager**

(757) 688.0230 Office

(757) 869.8239 Cell

[Michael.J.Romanelli@hii-nns.com](mailto:Michael.J.Romanelli@hii-nns.com)





- **Waterfront Projects – (Estimated \$30 Million)**

- **Program Readiness, Dredging and Port Security Barriers**

- Virginia Class Submarines
  - Montana and New Jersey (MOF, LLF, FDD and Pier 6)
- 688 Class Submarines
  - Columbus (Dry Dock 1 and Pier 5)
  - Boise (Dry Dock 4 and Pier 5)
- Reactor Complex Overhaul
  - CVN 73/ CVN 74 Integrated Campus Study
    - Coordination of assets and resources
  - CVN 74 USS Stennis (Dry Dock 11)

- **Dry Dock Certification**

- Dry Dock 1 Gate Inspection, Overhaul, Tunnel Improvements
- Dry Dock 2 Inspection, Tunnel Improvement
- Dry Dock 3 Preservation
- Dry Dock 4 Gate Inspection, Concrete Repairs
- Dry Dock 10 Inspection, Machinery Deck Refurbishment
- Dry Dock 11 Cell Wall Repair, Abutment Repairs, SLEP, Rail Repair
- Dry Dock 12 Gate Inspection
- FDD 7&8 Ballast Tank Overhaul, Inspection, Shiphandling System





- **Waterfront Projects – (Estimated \$30 Million Continued)**

## **Special Projects**

Superflood (Dry Dock 12)

- Intermediate Gate Mods (Complete)
- Intermediate Gate Refurbishment
- Sill Modification
- Dry Dock 12 Gate Upgrades
- Pumping System

Ocean Transport Barge

- JMAF Program Support

VPM MOF Expansion

- Construction Support

## **Waterborne Assets**

- Huntington Tug Docking
- Floating Fendering Repairs





## • Utilities Projects – (Estimated \$25 Million)

The Utilities Project Team is responsible for refurbishing, replacing, and upgrading all the yard's utility infrastructure. This includes power and piping distribution systems as well as gas farms and fuel stations. We provide an infrastructure that is safe and reliable in accordance with drawings, codes and specifications to provide the utility resources our trades need to build great ships.

- Power Distribution & Communications
  - Duct Banks
  - Manholes
  - Substations and Switchgear
  - Transformers
  - Emergency Generators: Diesel & Gas
  - AC and DC Cable Replacement
  - Fiber Horizontal Boring

- Piping Distribution
  - Water: Potable, Fire Protection, Demineralized.
  - Compressed Air: High & Low Pressure
  - Steam & Condensate: High & Low Pressure
  - Sewer and Storm Drains: Piping, Manholes, Lift Stations.
  - Welding Gases & Mixes: Argon, CO<sub>2</sub>, Nitrogen.
  - Flammable Gases: Oxygen, Propane, Natural Gas.
  - Fuel Oil, Oily Waste, JP5.

- Plants, Gas Farms & Fuel Stations
  - Liquid Gas Tanks and Vaporizers
  - Gas Mixers
  - Diesel and Gasoline Tanks & Dispensers
  - Oily Waste Treatment
  - Pump Houses

## Contact Information

**Michael Romanelli, Manager**

(757) 688.0230 Office

(757) 869.8239 Cell

[Michael.J.Romanelli@hii-nns.com](mailto:Michael.J.Romanelli@hii-nns.com)





- **Utilities Projects – (Estimated \$25 Million)**

- Electrical Infrastructure Projects**

- Yardwide High Voltage Cable Refurbishment
- Dry Dock 10 High Voltage Cable Repair
- Dry Dock 12 Cable Supports and Piezometer Repair
- B18 to B78 DC Tie Circuit Repairs
- LPAC Controls Upgrades for Blast and Coat
- B78 Low Pressure Air Motor Starter Upgrades
- B18 DC Switchgear Upgrade
- High Voltage Maintenance Support

- Pier 2 Planned Incremental Availability**

- Substation, Transformer Demolition
- Substation Design, Procurement and Installation
- Gas Switch Design, Procurement and Installation
- High Voltage Cable Design, Procumbent and Installation
- Coordination of Installation of Government Furnished Mobile Utilities Support Equipment (MUSE)







- **Utilities Projects – (Estimated \$25 Million Continued)**

## **Mechanical Infrastructure Projects**

- Yardwide Condensate Pump Repairs
- Pier 3 Lift Station Reliability
- South Yard Gas Pump Rehabilitation
- B78 Feedwater Pump Overhaul
- Lift Station Refurbishment (For DEQ Compliance)
- Dry Dock 11 River Water Replacement
- Low Pressure Air Pipeline Repairs B1745-B256
- Lift Station 27A Repairs
- Utility Tunnel Refurbishment
- River Water Refurbishment Pier 2-3

## **Pier 2 Planned Incremental Availability**

- Temporary System Design, Procurement and Installation
  - Firefighting System
  - River Water System

Utility System Overhauls Sanitary Sewer, River Water, City Water, Welding Gases, Air Systems.



# 2020 Work Scope

- **VCS Block-V Program Support**

Design and Construction of Facility Upgrades and Modifications in Support of Virginia Class Submarine Program Block-V Production, Primarily Driven by the Insertion of the Virginia Payload Module (VPM).

- Modular Outfitting Facility (MOF) Expansion
- MOF Bay 2 & 3 Services Additions
- Pier 6 Modifications and Tug Berth Relocation
- Temporary Pre-Commissioning Unit (PCU) Facility
- Construction Support Equipment (Strongbacks and Transfer System)
- VCS and CLB Ocean Transport Barge Berths
- Miscellaneous VCS Related Direct-Funded Projects

## Contact Information

**Davis Hill, Manager**

(757) 534.2464 Office

(757) 763.8173 Cell

[Jonathan.D.Hill@hii-nns.com](mailto:Jonathan.D.Hill@hii-nns.com)



# JMAF 2020-2022 Plan

- **Joint Manufacturing and Assembly Facility**
  - **\$500M Complete, Estimated \$250M 2020-2022**

Design and Construction of North Yard Expansion in Support of Multiple NNS Programs: Carrier New Construction (CVN), Virginia Class Submarine (VCS) including VPM, Columbia Class Submarine (CLB).

- CVN North Yard Weather Covers (complete 2016)
- CVN Unit Outfitting Hall (complete 2017)
- VCS Fixture Production Bay & APCO Fixture 1 (complete 2018)
- CLB Fixture Production Bays & APCO Fixture 2-3 (in progress, ECD 2020)
- VPM Rafted Module Facility (in progress, ECD 2020)
- CLB Ship Join Bay (starting now, ECD 1Q 2022)
- CLB Blast & Coat (starting now, ECD 4Q 2021)

## Contact Information

**Benjamin Duman, Manager**

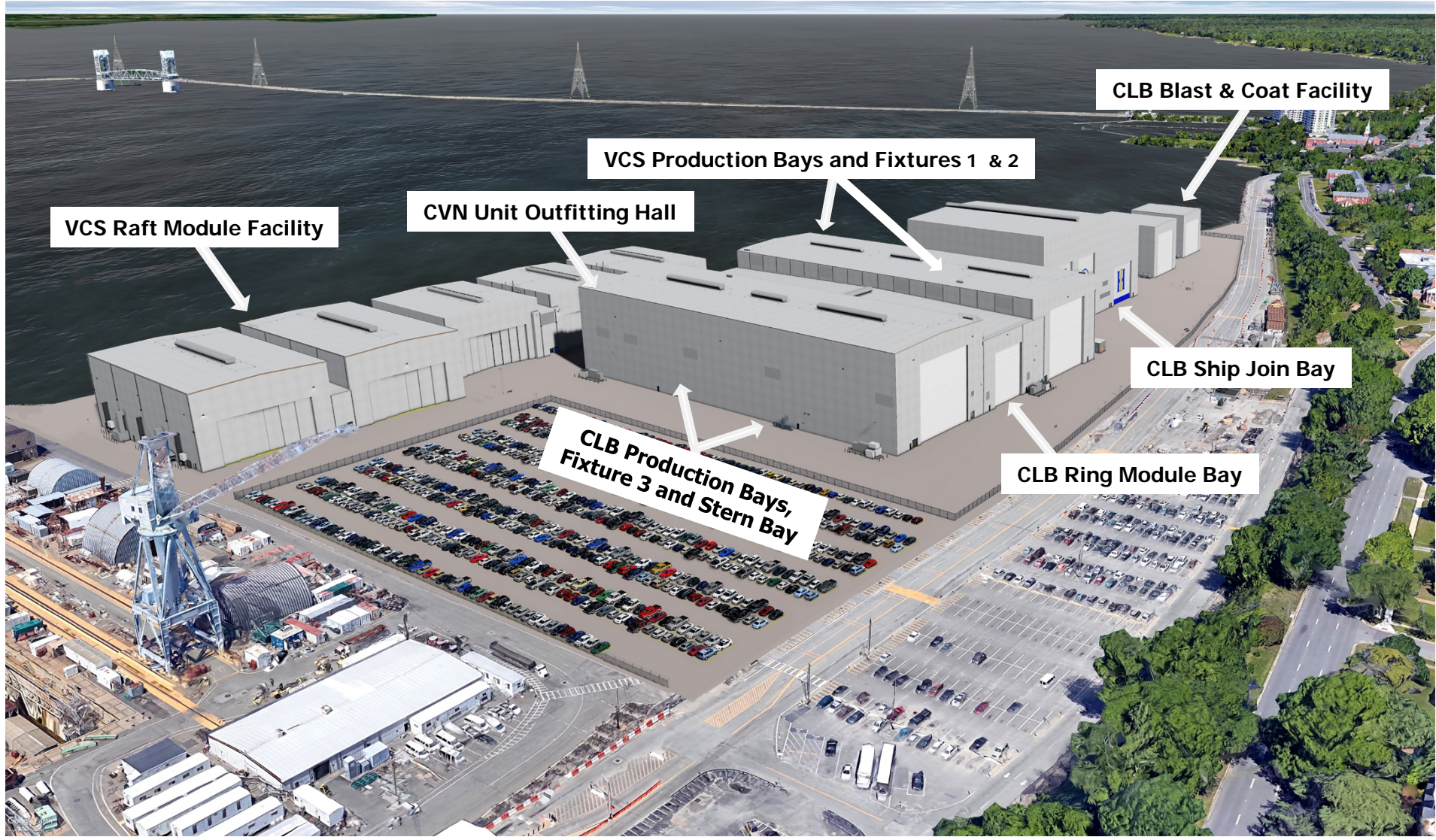
(757) 534.1509 Office

(757) 897.2654 Cell

[Benjamin.Duman@hii-nns.com](mailto:Benjamin.Duman@hii-nns.com)







VCS Raft Module Facility

CVN Unit Outfitting Hall

VCS Production Bays and Fixtures 1 & 2

CLB Blast & Coat Facility

CLB Production Bays,  
Fixture 3 and Stern Bay

CLB Ring Module Bay

CLB Ship Join Bay



# JMAF 2020-2022 Plan

- **Work Packages:**

- CLB Ship Join Bay
  - Pile Driving
  - Excavation, Site Grading and Paving
  - Concrete Foundations and Slab on Grade
  - Site Infrastructure (Storm, Sewer, Water, Elec, Mech)
  - Building Structure, Siding, Roofing, Doors
  - Mechanical Heating & Ventilating
  - Ships Supply and Exhaust
  - Process Welding Gases and Compressed Air
  - Lighting & Elec Distribution
  - Interior Buildout
- CLB Blast & Coat
  - Excavation, Site Grading and Paving
  - Concrete Foundations and Slab on Grade
  - Site Infrastructure (Storm, Sewer, Water, Elec, Mech)



# 5 Year Plan



- **Buildings & Grounds and Architectural Projects – (Estimated \$50 Million)**

Buildings & Grounds and Architectural team plan, design and construct new, upgrades and renovations to NNS heavy industrial shops, platens, nuclear facilities and office buildings. These facilities support all major shipyard programs: CVN New Construction, CVN Overhaul, Submarine Construction and Fleet Support. We partner with our customers to provide optimal facilities that transforms ideas into reality.

- Roof & Rollup Door Replacements
- Building Demolitions and Disposal
- Fire Protection Upgrades
- Ship Staging and Fixtures
- Parking Lot, Roads and Railroad
- HVAC System Replacements

- Personnel Relocations
- Quality of Life Projects
- Office Re-configurations
- Trailer/Conex Box Leases
- Furniture Procurement
- Special Projects

## Contact Information

**Bill Boyd, Manager**  
(757) 688.9985 Office  
(757) 810.9581 Cell

[William.Boyd@hii-nns.com](mailto:William.Boyd@hii-nns.com)





- **Buildings & Grounds / Nuclear Facilities Projects – (Estimated \$10 Million)**

- **Nuclear Facilities Demolition and Decommissioning Program**

- Nuclear Repair Machine Shop Demolition, B93/94
- Radio Chemistry Lab Demolition, B314
- Legacy Nuclear Facilities Decommissioning
  - Release of 16+ controlled facilities

- **Ship Staging Fixtures/Platforms - VCS and Columbia Programs**

- VCS Block V Platforms – HAB, AMR, Sail, NLD and Fan Room
- Ships Join Bay – Columbia Platforms
- SMOF Staging Upgrades

- **Ship/Trades Support Projects**

- Trades Active Learning Centers
- CVN74 Flight Deck, Medical and Marine Facility Modifications

- **Fire Protection Upgrade Projects**

- B1841, CRF Fire Alarm System Replacement
- B521, Replace Fire Suppression System
- B610, Fire Alarm Evacuation System

- **Building Support Projects**

- B520 Elevator Refurbishments
- CMOF Roof Winch Replacement & Repairs







- **Architectural Projects – (Estimated \$10 Million)**

## **Office Renovations and Personnel Relocations**

- B802 - Net Center
  - Talent Acquisition
  - Supply Chain Management
  - Contracts and Pricing
  - Business Management
  - Integrated Planning and Production Control (IPPC)
  - Human Resources Information Systems (HRIS)
  - Facilities Transportation
  - Shift Test and Shift Refueling Engineers Training
  - SUPSHIP
- B520
  - Domino Relocations / Backfill – Plan in Development
- B600
  - Consolidation of Reactor Plant Planning Yard and Propulsion Plant Planning Yard engineering personnel

## **Quality of Life**

- Restroom Renovations and Improvements
- Reclaimed Spaces, PPE Vending Equipment, Employee Trades Cafes



# 1 Year Plan

- **Manufacturing & Shops– (Estimated \$58M)**

Suitability, design, procurement and installation of Manufacturing Equipment and Facilities in support of Component Fabrication and Assembly and Structural Fabrication and Assembly. (we support the pieces-part makers)

- Installation & testing of submarine hull machines & special tooling
- Machine tool manufacturing installations
- Component transportation equipment
- Annual SFA upgrades (robots, panel lines, profile lines)
- Fab equipment to support program changes (burning, bending)
- New specialty Structural fabrication equipment (CLB new parts)
- Foundry upgrades to meet changing customer requirements
- Miscellaneous metrology, laboratory, & testing equipment

## Contact Information

**Ed Delaney - Manager**

(757) 688.9227 Office

(757) 771.8115 Cell

[Edmund.P.Delaney@hii-nns.com](mailto:Edmund.P.Delaney@hii-nns.com)



# 2020 Year Plan

- **CVN 80/81 Program Support – (Estimated \$19M)**

Design and construction of new facilities, upgrades and modifications to existing facilities in Support of CVN 80/81 program, primarily driven by capacity and efficiency needs for the CVN 2 ship contract.

- Super Lift Hall (SLH)
- Personnel Support Building for the SLH
- Yard Wide Transportation Study
- Miscellaneous CVN Related Projects


## Contact Information

**Scott Miller, Manager**  
(757) 380-2151 Office  
(757) 262-6199 Cell  
[Scott.A.Miller@hii-nns.com](mailto:Scott.A.Miller@hii-nns.com)



# Cost Loaded Schedule

## Phase 1 HLFE 1042.1 (High Level Feasibility Estimate)



### HIGH LEVEL FEASIBILITY ESTIMATE

**GENERAL INFORMATION**

Project Title: Cost Loaded Project Process  
 Project Number (As Applicable):  
 Date Estimated:  
 Notification Number:  
 Work Order Number:

**CONTACT INFORMATION**

NNG Estimator	As Ramos	Department:	Phone:
NNG Value Stream Leader		Department:	Phone:
NNG Customer		Department:	Phone:
NNG Customer		Department:	Phone:
NNG Customer		Department:	Phone:

**VERIFIED WORK SCOPE**

An engineering study is required to produce a Project Plan. See Cost & Schedule.

**Funding Stream Rationale**  
 Due to the nature of work identified and discussion with Facilities Finance, (Expense, Capital, Direct, Capital and Expense) funding will need to be reserved. Other projects with similar scope of works that helped make this preliminary determination were: include appropriate projects or justification as discussed with Finance. A final analysis of the funding stream will be performed during the project planning phase.

**WORK COST ESTIMATE**

Description	Direct	Capital	Expense
Engineering Study	110.0	0.0	0.0
Project Plan	0.0	0.0	0.0
Design Engineering	50.0	0.0	0.0
Bid & Award	0.0	0.0	0.0
Material Lead-Time	50.0	0.0	0.0
Construction	0.0	100.0	200.0
Reliability Excellence	0.0	0.0	0.0
Commissioning	0.0	0.0	0.0
Project & Construction Management	0.0	0.0	100.0
Contingency (Specify whether contingency is considered due to Scope, Design or Construction)	10.0	10.0	0.0
<b>TOTAL PROJECT COST (in Thousands)</b>	<b>120.0</b>	<b>110.0</b>	<b>420.0</b>

Cost Basis:  Contractor/Vendor Budgetary Est.  RMeans  Historical Cost from:

	Quarter 1			Quarter 2			Quarter 3			Quarter 4		
	M1	M2	M3	M4	M5	M6	M7	M8	M9	M10	M11	M12
<b>DIRECT</b>	Total Q1: 0.0 Total Q2: 0.0 Total Q3: 0.0 Total Q4: 0.0											
<b>CAPITAL</b>	Total Q1: 0.0 Total Q2: 0.0 Total Q3: 0.0 Total Q4: 0.0											
<b>EXPENSE</b>	Total Q1: 0.0 Total Q2: 0.0 Total Q3: 0.0 Total Q4: 0.0											

**EXPENDITURE**

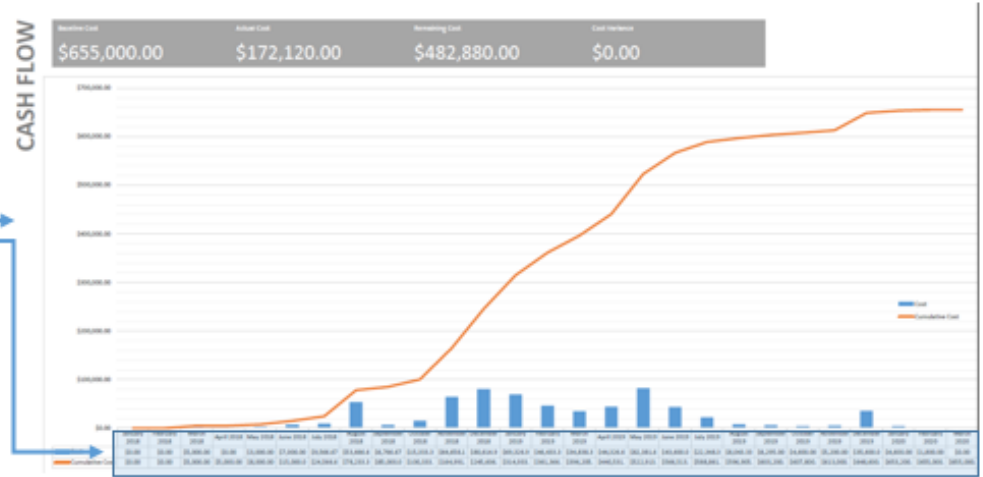
	Quarter 1			Quarter 2			Quarter 3			Quarter 4		
	M1	M2	M3	M4	M5	M6	M7	M8	M9	M10	M11	M12
Engineering Study	[Gantt chart bars]											
Project Plan	[Gantt chart bars]											
Funding Authorization	[Gantt chart bars]											
Design Engineering	[Gantt chart bars]											
Bid & Award	[Gantt chart bars]											
Material Lead-Time	[Gantt chart bars]											
Construction	[Gantt chart bars]											
Reliability Excellence	[Gantt chart bars]											
Commissioning	[Gantt chart bars]											
In-Service Date	[Gantt chart bars]											

**ASSUMED RISK FACTORS**

F-040-12 Revised: 1/25/2015

## Project Template

ID	Task Name	Duration	Start	Finish	Notes
0	COST LOADED PROJECT	728 days	Mon 3/13/18	Fri 12/18/20	
1	Plan and Dock Schedule and Projects 2D/3D	728 days	Mon 3/13/18	Fri 12/18/20	Plan and Dock Schedule and Projects 2D/3D
2	Fleet Cabin Gate for Survey and As built	0 days	Mon 3/13/18	Fri 6/15/18	Fleet Cabin Gate for Survey and As built
3	LAUNCH USS Kennedy CVN 78	0 days	Sun 11/24/18	Sun 11/24/18	LAUNCH USS Kennedy CVN 78
4	Dry dock Ready for Launch/Removal of dock floor structural steel preparations for CVN launch	0 days	Thu 11/29/18	Thu 11/29/18	Dry dock Ready for Launch/Removal of dock floor structural steel preparations for CVN launch
5	EX-CVN 41 Docking East End	252 days	Thu 5/2/19	Fri 11/16/19	EX-CVN 41 Docking East End
6	CLIENT REVIEW/CONCURRENCE	35 days	Mon 6/12/18	Fri 6/16/18	CLIENT REVIEW/CONCURRENCE
7	Project 10 and Associated Dock Modifications	456 days	Thu 5/12/18	Thu 11/12/19	Project 10 and Associated Dock Modifications
8	PROJECT PLAN (20W F-1042.0)	39 days	Thu 5/12/18	Mon 6/11/18	PROJECT PLAN (20W F-1042.0)
9	Design	125 days	Mon 5/13/18	Fri 11/9/18	Design
10	BID & AWARD (20W F-1042.0)	39 days	Mon 10/15/18	Thu 11/8/18	BID & AWARD (20W F-1042.0)
11	Project Execution	283 days	Thu 11/15/18	Thu 11/12/19	Project Execution
12	INTERNAL NNG PROCESSING	118 days	Mon 5/14/18	Thu 5/12/19	INTERNAL NNG PROCESSING



# Cost Loaded Schedule

Phase 2 Project Plan 1042.2

## PROJECT PLAN

Notification: 1007007  
Title: Project Title



**Project Scope:** (Summary)

**Justification:** To Be Provided

**Design Basis:** Codes (Building/Mechanical/Electrical/NFPA etc.)

**Performance Goals:** Measureable Performance Goals (What is the project supposed to do?)

**Execution of Plan:** (Outline responsible parties/actions relative to Demolition/Installation, Engineering, Design, Labor, Construction Management, Procurement, Training, Documentation)

**Ergonomics:** (Provide statement regarding use of new Assets; Employ O27 Ergonomic Subject Matter Experts in design reviews, Utilize Industry SME's such as Ergonomics Center of North Carolina when appropriate)

**Crane Envelope Incursion:**  Yes  No If Yes, Explain:

**LCAM:** Include Deliverables/Action Parties related to Equipment/Asset Management including documentation, recommended spare parts, Operator Daily Checklists, Maintenance Requirement Cards, Joint Project Support documentation, Machine/Work Area Cleanliness Requirements, Include Input from O45 Maintenance Engineering

**Training:** (Operator and Maintenance, Development of Job Performance Standard, Who is responsible? Who is to be trained? Cost of training is to be department expensed)

**Security Plan:** (Whether Area is a controlled area; Work only during normal working times)

**Quality Plan:** 3<sup>rd</sup> Party Oversight, Etc. to ensure a quality job

**Capacity Validation:** (as applicable, statement on availability of existing assets in the NNS inventory to replace equipment.)

**Project Budget /Cash Flow:**

\$ (thousands)

*For Projects Over under \$500K a quarterly breakdown is permissible.*

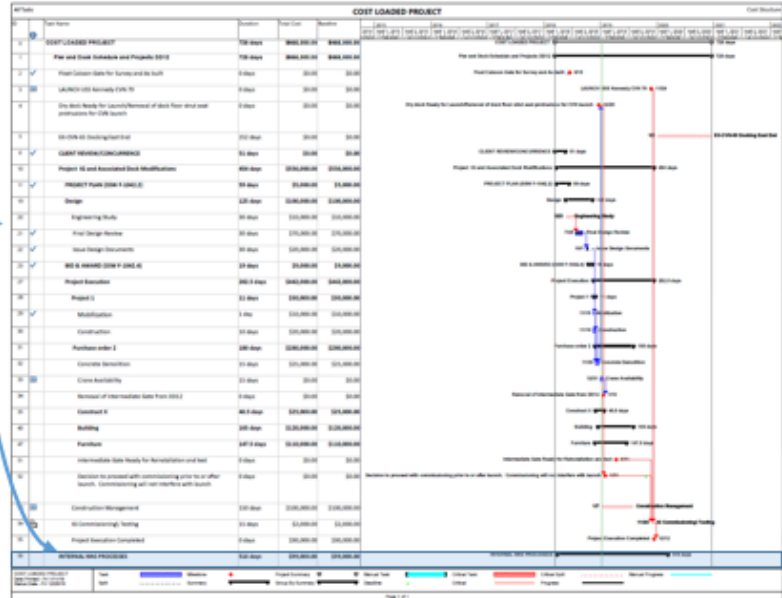
	2019				2020				Total
	1 <sup>st</sup> Qtr	2 <sup>nd</sup> Qtr	3 <sup>rd</sup> Qtr	4 <sup>th</sup> Qtr	1 <sup>st</sup> Qtr	2 <sup>nd</sup> Qtr	3 <sup>rd</sup> Qtr	4 <sup>th</sup> Qtr	
Capital	\$15.0	\$60.0	\$20.0	\$10.0	\$0.0	\$0.0	\$0.0	\$0.0	\$0.0
Expense	\$100.0	\$300.0	\$100.0	\$50.0	\$0.0	\$0.0	\$0.0	\$0.0	\$0.0
<b>Total</b>	<b>\$115.0</b>	<b>\$360.0</b>	<b>\$120.0</b>	<b>\$60.0</b>					

Prepared By: Joe Engineer  
Form No. F-040-8

Date Prepared: X/XX/XX

HUNTINGTON INGALLS INDUSTRIES PRIVATE / PROPRIETARY LEVEL I

Project Name: Pier 2 CVN78 FY20 PIA Notification #: 11037907							
Line Item	Description	Type	Qty	UM	\$ Unit	Total	
<b>Capital</b>							
1	Construction X	STRUCTURAL	1.00	LS	\$100,000.00	\$ 100,000.00	
2	<b>Expense</b>						
3	Construction	ELECTRICAL	1.00	EA	\$200,000.00	\$ 200,000.00	
4	Construction Y		1.00		\$200,000.00	\$ 200,000.00	
5							
6							
7							
<b>Infrastructure Subtotal</b>						\$ 500,000.00	
8	Engineering Design			2%	LS	\$500,000.00	\$10,000.00
9	Engineering Support			1%	LS	\$500,000.00	\$5,000.00
<b>Subtotal</b>						\$ 515,000.00	
<b>Overhead</b>							
10	O41 Plant Engineering - Project Management	General	3%		\$ 515,000.00	\$ 25,750.00	
11	O41 Plant Engineering - Construction Management	General	3%		\$ 515,000.00	\$ 15,450.00	
12	O45 Maintenance Planning - Maintenance Engineering	General	3%		\$ 515,000.00	\$ 15,450.00	
13	O05 SCM Compliance & Operations - Procurement	General	1%		\$ 515,000.00	\$ 5,150.00	
14	Commissioning & Testing	General	2%		\$ 515,000.00	\$ 10,300.00	
15	Closeout	General	1%		\$ 515,000.00	\$ 2,575.00	
16	As-built Drawings	General	1%		\$ 515,000.00	\$ 2,575.00	
17		General	1%		\$ 515,000.00	\$ 2,575.00	
<b>Overhead Subtotal</b>						\$ 79,825.00	
18	Escalation @ 3% / year (1.63 years)	General	0%		\$ 394,825.00	\$ -	
19	Contingency	General	10%		\$ 394,825.00	\$ 39,482.50	
<b>Reserve Subtotal</b>						\$ 39,482.50	
<b>Project Total</b>						\$ 654,812.50	



# Cost Loaded Schedule

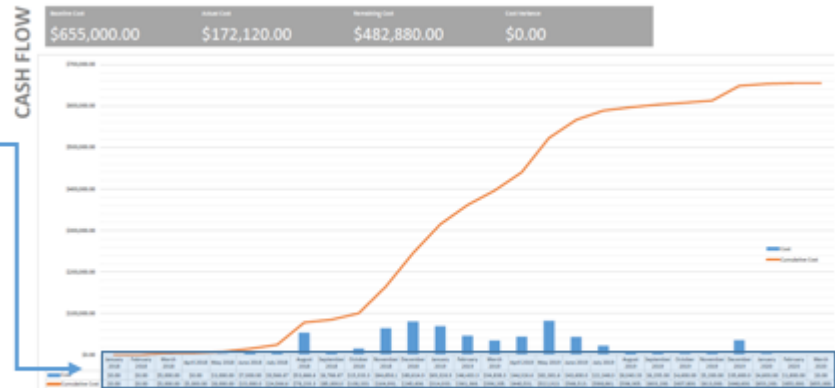
Capital:  
Expense (Training, Spare Parts):

*For Projects Over \$500K use a monthly breakdown.*


Year	Jan	Feb	Mar	Apr	May	Jun	Jul	Aug	Sep	Oct	Nov	Dec	Total
2019	5.0	2.0	3.0	5.0	50.0	50.0	35.0	70.0	170.0	100.0	100.0	60.0	0.0
2020	0.0	0.0	0.0	0.0	0.0	0.0	0.0	0.0	0.0	0.0	0.0	0.0	0.0
<b>Project Total:</b>													<b>0.0</b>

Authorization

After Authorization is approved, create a Base Line on the schedule on MS Project



**Bid and Award Process 1042.4**



## BID WORKSHEET

Item Number: 1

Description: Construct X

Quantity: 100

Unit:  Each  Lot  Other:

**SCOPE OF WORK**

**SCOPE:**  
CONSTRUCT X DESIGNER ACTIVITIES **THE SCOPE WILL PRODUCE SPECIFIC DELIVERABLES**

**Deliverables:**

- Construction
- Reliability Excellence
- Commissioning

**END 12/15/20**

**GENERAL PROCUREMENT NOTES:**

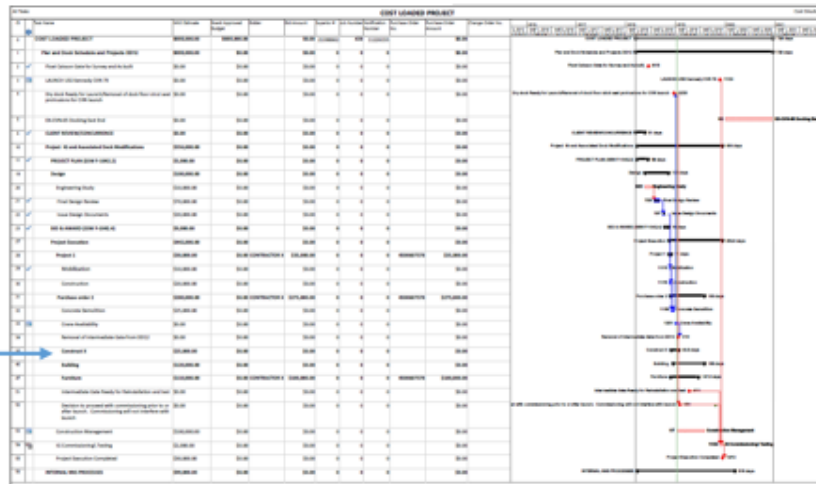
H1010 MSDS H1020 Hazmat H1030 Asbestos Fiber H1070 Asbestos Material H1090 Arsenic H1110 Paint w/ Lead M2050 Mfg Authorization M3010 Mercury Clause PE101 Engineering Notes PE102 Time & Material PE201 Safety Equipment PE202 Working Hours PE203 Yellow Plastic PE204 Welding PE205 Painting PE206 Gen Notes PE207 Electrical 220V PE208 Electrical 460V PE209 <del>Contract</del> Mahual PE211 Contractor Lift Plan	PE300 Spec Conditions PE301 Mods Gen Cond PE302 Responsibilities PE303 Lawful Agencies PE304 Liens PE305 Contractor Storage PE306 Interfere Operation PE307 Protection Facility PE308 Utility Protection PE309 Groundwater PE310 Sanitary Provisions PE311 Supplied Services PE312 Demo Removal PE313 Clean Up PE314 Access to Site PE315 Working Hours PE316 Safety Precautions PE317 Safety Meetings PE318 Qualified Persons	PE319 LOTO PE320 Conf. Red Tags PE321 HAZ Standard PE322 Yellow Material PE323 Matj Exclusions PE324 <del>USE MATJ</del> PE325 Asbestos Biop PE326 Laser Equipment PE327 Nuclear Source PE328 Ceramic Fibers PE329 Lead Procedure PE330 Crane Safety PE331 Proprietary Clause PE332 Access to Records PE333 Permits PE334 Environ Utility Tunnel PE335 Unclassified MHP PE336 Guarantee of Work PE337 Owner Reqs	Q2050 Quality System T1040 Tagging T1450 <del>Calibration</del> V1010 W1270 Wire Rope W1470 Wire Rope <del>Red</del> C3120 Non Elec Wire Rope Engineering Guides Furniture Delivery Notes Invoice Statement Modification Statement Delivery (Time Is of the Essence) PO Item 2a - Documentation PO Item 2b - System PO Item 3 - Critical Spares PO Item 4 - Training PO Item 5 - Warranty Standard Excavation Permit
---	--	--	---

Each deliverable becomes an activity on the schedule

**FACILITIES & WATERFRONT SUPPORT**

F-040-5 2 BID & AWARD

**Project Template Bid Table**



The table contains columns for item number, description, unit, quantity, and price. The Gantt chart on the right shows activity bars along a timeline, with red and blue bars representing different project phases or components.

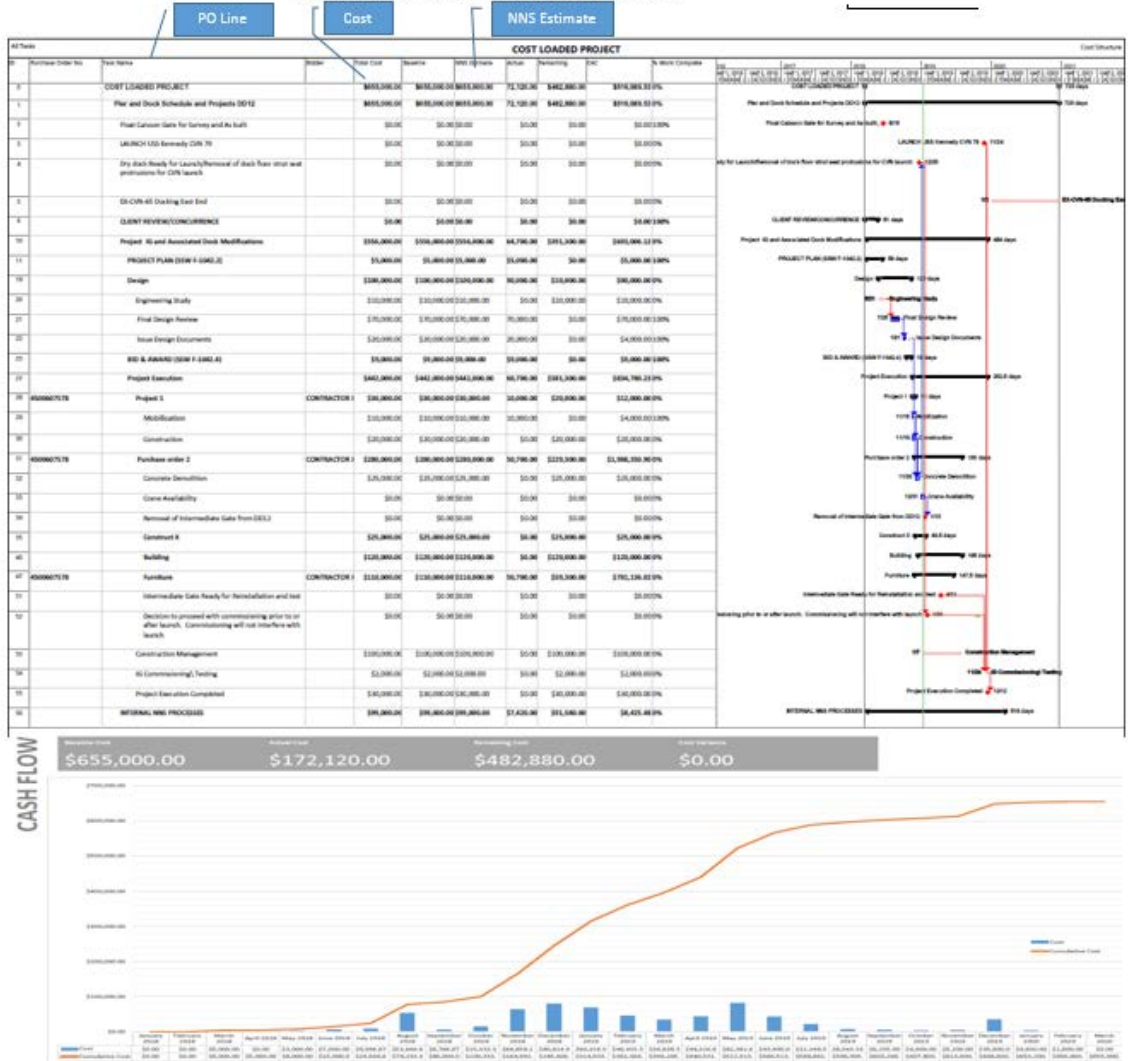
- Can be multiple PO and multiple Bids
- PO Line items become schedule activities
- Construction Coordinator will adjust estimates based on Bids received



# Cost Loaded Schedule

Construction Process 1042.5

## Project Template Tracking for Construction

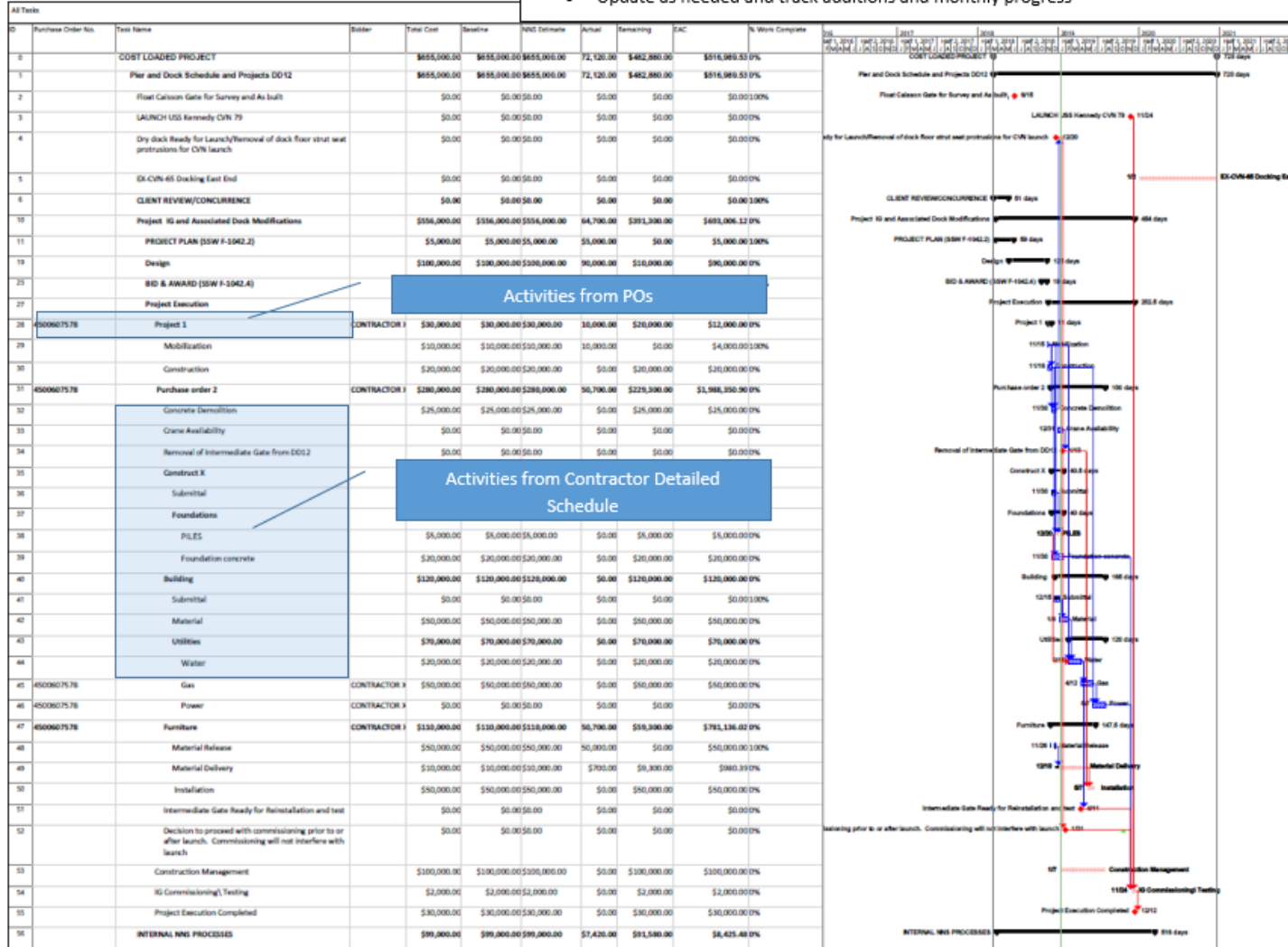




# Cost Loaded Schedule

## Contractor Schedule

- Required by Construction A
- Update Schedule to include contractor Breakdown for Payment according to PO Line Items
- Update as needed and track additions and monthly progress



# Procurement

- Grouping of work
- Design Build
- PPM



# Automated Accounts Payable Process

Mail invoices to: [invoices@hii-nns.com](mailto:invoices@hii-nns.com)

- The remit address should be clearly identified on the invoice.
- Invoices must be submitted as an Adobe - PDF. Each PDF should contain one (1) invoice and its corresponding backup documents.
- Ensure all documents are submitted with the invoice (i.e. travel receipts, waivers, insurance papers, T&M Sheets, etc.)
- Invoices containing freight charges of \$200 or more will need to also include the freight bill from the carrier.
- Non-purchase order invoices must list the email address of their NNS point of contact.



# Invoice Criteria

Accounts Payable will validate each invoice to ensure:

- The ten-digit purchase order number is clearly identified on the invoice (if applicable). There should be no additional characters included within the PO number; a space or break is required.
- Quantity and pricing matches what is on the purchase order.
- All line items and line amounts are clearly identified on the invoice and correspond with the PO.
- The unit of measure on the invoice **MUST** be the same as displayed on the purchase order.
- Must have a unique invoice number.
- Must have an invoice date.

**Invoices that do not meet the above criteria above will be returned "unpaid" to the contractor/vendor until they are correctly submitted.**



# Year-End Invoicing

Beginning on November 7, 2019 – copy Project Leads on e-mails submitting electronic invoices for all invoices over \$50K.

## Estimated Invoices:

- If requested, submit estimated invoices directly to the Project Leads. DO NOT submit estimated invoices to Accounts Payable or to [invoices@hii-nns.com](mailto:invoices@hii-nns.com).
- Estimated invoices must contain all of the information required on a ready-to-pay invoice and be clearly labeled as an “**ESTIMATED**” invoice.
- Report actual progress on estimated invoices to the Project Lead on or before December 27<sup>th</sup>. After January 1<sup>st</sup>, submit a ready-to-pay invoice for actual progress accounted for by the estimated invoice to [invoices@hii-nns.com](mailto:invoices@hii-nns.com) for payment as usual.



- If you have questions regarding this presentation, please contact your Contract Coordinator or:

Mike Kehoe

O41 – Plant Engineering

757-534-3241

[Michael.T.Kehoe@hii-nns.com](mailto:Michael.T.Kehoe@hii-nns.com)





# **Newport News Shipbuilding**

A Division of Huntington Ingalls Industries